

## Serie SGS/F Richter 2-way Cylindrical Sight Glass



### Keep for future use!

This operating manual must be strictly observed before transport, installation, operation and maintenance

Subject to change without notice.

Reproduction is generally permitted with indication of the source.

© Richter Chemie-Technik GmbH

9540-055-en Revision 10 Edition 10/2011

## List of Contents

List of Contents .....	2	5 Transport, storage and disposal .....	6
Relevant documents .....	2	5.1 Storage.....	6
<b>1 Technical data .....</b>	<b>2</b>	5.2 Return consignments .....	6
1.1 Name plate, CE and body markings.....	3	5.3 Disposal .....	6
1.2 Tightening torques.....	3	<b>6 Installation .....</b>	<b>7</b>
1.3 Pressure-temperature diagram.....	4	6.1 Flange caps and gaskets .....	7
<b>2 Notes on safety .....</b>	<b>4</b>	6.2 Direction of flow and installation position...	7
2.1 Intended use .....	4	6.3 Grounding .....	7
2.2 For the customer / operator .....	5	6.4 Pressure test .....	7
2.3 Improper operation .....	5	<b>7 Operation .....</b>	<b>7</b>
<b>3 Safety notes for applications in potentially explosive areas based on the Directive 94/9/ EC (Atex).....</b>	<b>5</b>	7.1 Initial commissioning.....	7
3.1 Intended use .....	5	7.2 Improper operation and their consequences .....	7
<b>4 Safety note for valves, certified to German Clean Air Act (TA-Luft) .....</b>	<b>6</b>	7.3 Shutdown .....	7
		<b>8 Malfunctions .....</b>	<b>8</b>
		<b>9 Maintenance .....</b>	<b>8</b>
		9.1 Dismantling the cylindrical sight glass .....	8
		<b>10 Sectional drawing .....</b>	<b>9</b>

## Relevant documents

- ◆ Declaration of conformity acc. to the EC Pressure Equipment Directive 97/23/EG
- ◆ Manufacturer's Declaration German Clean Air Act (TA-Luft)
- ◆ Form for Safety Information Concerning the Contamination QM 0912-16-2001\_en

## 1 Technical data

### Manufacturer:

Richter Chemie-Technik GmbH  
 Otto-Schott-Str. 2  
 D-47906 Kempen  
 Telephone: +49 (0) 2152 146-0  
 Fax: +49 (0) 2152 146-190  
 E-Mail: [richter-info@richter-ct.com](mailto:richter-info@richter-ct.com)  
 Internet: <http://www.richter-ct.com>

### Designation:

2-way cylindrical sight glass, series SGS/F  
 Certified to German Clean Air Act (TA Luft)  
 Strength and tightness (P10, P11) of the pressure-bearing body tested to DIN EN 12266-1.

### Flange connecting dimensions:

DIN EN 1092-2, design B  
 (ISO 7005-2 type B) PN 16  
 or flanges drilled to ANSI B16.5 Class 150

Face to face: DIN EN 558-1, basic series 1  
 (ISO 5752 basic series 1)  
 optionally face to face acc. to specifications

### Materials:

Body material: Ductile cast iron EN-JS 1049 /  
 ASTM A395

Lining material: PFA  
 On request: conductive lining

Glass cylinder: borosilicate glass

**Temperature range:** -60 °C to +150 °C  
 See pressure-temperature diagram in Section 1.3.

**Operating pressure:** from vacuum to max. 6 bar  
 See pressure-temperature diagram in Section 1.3.

### Size:

DN 15, 20, 25, 32, 40, 50, 65, 80, 100

**Weight:**

Nom. size	15	20	25	32	40	50	65	80	100
approx. kg	3	3	4	5	8	10	13	20	30

**Installation position:**

A direction arrow on the shell indicates the direction of flow. See [Section 6.2](#).

**Dimensions and parts:**

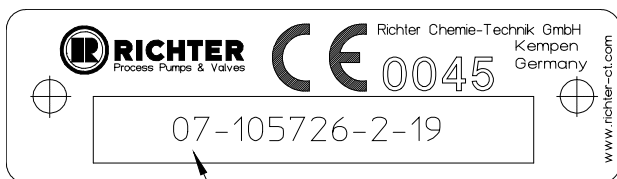
See sectional drawing [Section 10](#).

## 1.1 Name plate, CE and body markings

The stainless steel name plate is firmly riveted to the shell.

If the operator attaches his identification, it must be ensured that the sight glass matches the application in question.

No CE marking is required for the sizes DN 15, 20 and 25, the name plate is therefore without any CE marking.

**Example: Name plate with CE marking**

9500-43-1140\_CE\_en/4-0

**Body marking:**

The following are visible on the shell according to DIN EN 19 and AD 2000 A4:

- ◆ Nominal size
- ◆ Rated pressure
- ◆ Shell material
- ◆ Manufacturer's identification
- ◆ Melt number/Foundry identification
- ◆ Foundry date

**Glass cylinder:**

- ◆ Company name
- ◆ Operating gauge pressure
- ◆ Temperature
- ◆ Arrow for direction of flow

## 1.2 Tightening torques

**All screws greased, tighten in diametrically opposite sequence!**

The tightening torques for pipe screws and cylindrical glass screws mentioned must not be exceeded. For an exception, see [Section 6](#).

The following tightening torques are recommended:

**Pipe screws**, flanges to ISO/DIN

Flange nom. size [mm]	Screws [DIN]	Tightening torque [Nm]
15	4 x M12	12
20	4 x M12	12
25	4 x M12	12
32	4 x M16	18
40	4 x M16	22
50	4 x M16	30
65	4 x M16	40
80	8 x M16	25
100	8 x M16	30

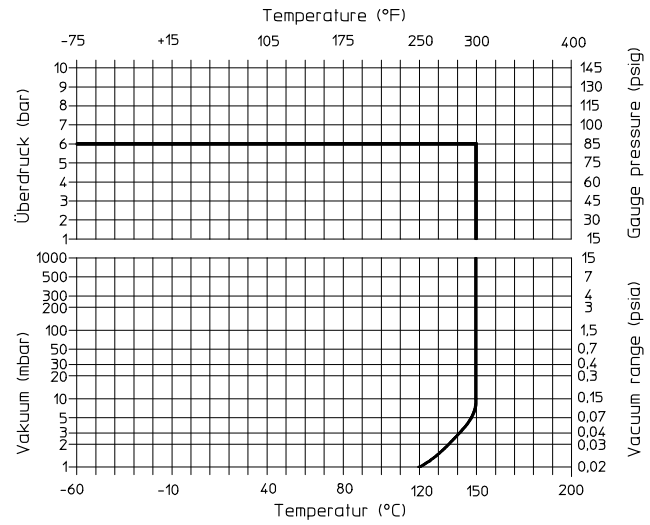
**Pipe screws**, flanges to ISO/DIN, drilled to ASME

Flange nom. size		Screws	Tightening torque
[mm]	[inch]	[ASME]	[in-lbs]
15	½	4 x ½"	106
20	¾	4 x ½"	106
25	1	4 x ½"	106
32	1¼	4 x ½"	106
40	1½	4 x ½"	133
50	2	4 x 5/8"	221
65	2½	4 x 5/8"	266
80	3	4 x 5/8"	354
100	4	8 x 5/8"	266

**Cylindrical glass screws**

Flange nom. size		Screws [ISO/DIN]	Tightening torque	
[mm]	[inch]		[Nm]	[in-lbs]
15	½	4 x M8	10	89
20	¾	4 x M8	10	89
25	1	4 x M8	15	133
32	1¼	4 x M8	15	133
40	1½	4 x M12	25	222
50	2	4 x M12	35	310
65	2½	4 x M12	35	310
80	3	8 x M16	60	531
100	4	8 x M16	60	531

**1.3 Pressure-temperature diagram**



When used in the minus temperature range, the regulations applicable in the country in question must be observed.

**2 Notes on safety**

This operating manual contains fundamental information which is to be observed during installation, operation and maintenance. It must therefore be read before installation and commissioning.

For valves which are used in potentially explosive areas, see **Section 3**.

Installation and operation are to be performed by qualified staff.

The area of responsibility, authority and supervision of the staff must be regulated by the customer.



**General hazard symbol!**  
People may be put at risk.



**Safety symbol!** The cylindrical sight glass and its function may be put at risk if this safety symbol is not observed.

It is imperative to observe warnings and signs attached directly to the cylindrical sight glass and they are to be kept fully legible.

**Non-observance of the notes on safety may result in the loss of any and all claims for damages.**

For example, non-observance may involve the following hazards:

- ◆ Failure of important functions of the sight glass/plant.
- ◆ Risk to people from electric, mechanical and chemical effects.
- ◆ Risk to the environment through leaks of hazardous substances.

**2.1 Intended use**

Richter sight glasses of the series SGS/F are pressure relief components in accordance with the Pressure Equipment Directive (PED) for the passage of fluids with all-round vision into the internal chamber. The sight glasses are suitable for vapours, gases and liquids of group 1 according to the PED and have a corrosion-resistant plastic lining.

They are used to observe the flow, filling level, condition, colour and gas contents of media in pipes and containers and near pumps.

Richter sight glasses are designed

- for pure and slightly solids-laden media
- for media where stainless steel is not corrosion-resistant
- as an alternative to valves made of expensive special metals (Hastelloy, monel, tantalum etc.)
- for metal-reactive media, e.g. H<sub>2</sub>O<sub>2</sub>
- for pure media where the good cleaning possibilities and anti-adhesive surfaces of the sight glass are important.

Solids can lead to increased wear, leaks, damage to sealing surfaces or to a reduction in the service life of the sight glass.

If the sight glass is intended for operating data other than those intended, the customer must carefully examine whether the design of the sight glass, accessories and materials are suitable for the new application (consult the manufacturer).

## 2.2 For the customer / operator

When using the cylindrical sight glass, it must be ensured that

- ◆ hot or cold sight glass parts are protected by the customer against being touched
- ◆ the sight glass has been properly installed in the pipe system
- ◆ the usual flow rates are not exceeded in continuous operation.

This is not the manufacturer's responsibility.

Loads caused by earthquakes were not allowed for in the design.

Fire protection to DIN EN ISO 10497 is not possible (plastic lining and plastic components).

## 2.3 Improper operation

The operational reliability of the cylindrical sight glass supplied is only guaranteed if it is used properly in accordance with **Section 2.1** of this operating manual.



The operation limits specified on the name plate and in the pressure-temperature diagram must under no circumstances be exceeded.

## 3 Safety notes for applications in potentially explosive areas based on the Directive 94/9/ EC (Atex)

The valves are intended for use in a potentially explosive area and are therefore subject to the conformity assessment procedure of the directive 94/9/EC (ATEX).

As part of this conformity assessment, an ignition hazard analysis to EN 13463-1 to satisfy the fundamental safety and health requirements was conducted with the following result:

- ◆ **The valves do not have any ignition source of their own.**
- ◆ **The valves are not covered by the scope of application of the ATEX directive and therefore do not need to be identified accordingly.**
- ◆ **The valves may be used in a potentially explosive area.**

It is imperative to observe the individual points of intended use for application in a potentially explosive area.

### 3.1 Intended use

**Inadmissible modes of operation, even for brief periods, may result in serious damage to the valve.**

**In connection with explosion protection, potential sources of ignition (overheating, electrostatic and induced charges, mechanical and electric sparks) may result from these inadmissible modes of operation; their occurrence can only be prevented by adhering to the intended use.**

Furthermore, reference is made in this connection to the Directive 95/C332/06 (ATEX 118a) which contains the minimum regulations for improving the occupational health and safety of the workers who may be at risk from an explosive atmosphere.

A difference is made between two cases for the use of chargeable liquids (conductivity  $< 10^{-8}$  S/m):

#### 1. Chargeable liquid and non-conductive lining

Charges can occur on the lining surface. As a result, this can produce discharges inside the valve. However, these discharges cannot cause ignitions if the valve is completely filled with medium.

If the valve is not completely filled with medium, e.g. during evacuation and filling, the formation of an explosive atmosphere must be prevented, e.g. by superimposing a layer of nitrogen. It is recommended to wait 1 hour before removing the valve from the plant in order to permit the elimination of static peak charges.

This means that, to safely prevent ignitions, the valve must be completely filled with medium at all times or else a potentially explosive atmosphere must be excluded by superimposing a layer of inert gas.

#### 2. Chargeable liquid and conductive lining

No hazardous charges can occur as charges are discharged direct via the lining and shell (surface resistance  $< 10^9$  Ohm, leakage resistance  $< 10^6$  Ohm)

**Static discharges of non-conductive linings are only produced through the interaction with a non-conductive medium and are therefore the responsibility of the plant operator.**

**Static discharges are not sources of ignition which stem from the valves themselves!**

- The temperature of the medium must not exceed the temperature of the corresponding temperature class or the maximum admissible medium temperature as per the operating manual.

- If the valve is heated (e.g. heating jacket), it must be ensured that the temperature classes prescribed in the Annex are observed.
- To achieve safe and reliable operation, it must be ensured in inspections at regular intervals that the valve is properly serviced and kept in technically perfect order.
- Increased wear to the valve can be expected with the conveyance of liquids containing abrasive constituents. The inspection intervals are to be reduced compared with the usual times.
- Actuators and electric peripherals, such as temperature, pressure and flow sensors etc., must comply with the valid safety requirements and explosion protection provisions.
- The valve must be grounded. This can be achieved in the simplest way via the pipe screws using tooth lock washers. Otherwise grounding must be ensured by other action, e.g. cable bridges.
- Plastic-lined valves must not be operated with carbon disulphide.

## 4 Safety note for valves, certified to German Clean Air Act (TA-Luft)

On request, this valve can be supplied compliant with the German Clean Air Code.

Certificate / Manufacturer Declaration Validity is dependent on the operating instructions being read and observed.

In particular, servicing must be conducted at regular intervals, and the bolted connections relevant for tightness must be inspected and retightened if necessary.

## 5 Transport, storage and disposal



It is imperative, for all transport work, to observe generally accepted engineering practice and the accident prevention regulations.



The cylindrical sight glass is supplied with flange caps. Do not remove them until just before installation. They protect the plastic surfaces against dirt and mechanical damage.

Handle the goods being transported with care. During transport the sight glass must be protected against impacts and collisions.

Directly after receipt of the goods, the consignment must be checked for completeness and any in-transit damage.

Do not damage epoxy coating.

### 5.1 Storage

If the sight glass is not installed immediately after delivery, it must be put into proper storage.

It should be stored in a dry, vibration-free and well-ventilated room at as constant a temperature as possible.

Elastomers are to be protected against UV light.

In general, a storage period of 10 years should not be exceeded.

### 5.2 Return consignments



Sight glasses which have conveyed aggressive or toxic media must be well rinsed and cleaned before being returned to the manufacturer's works.

It is **imperative** to enclose a **safety information sheet / general safety certificate** on the field of application with the return consignment.

Pre-printed forms are enclosed with the installation and operating manual.

Safety precautions and decontamination measures are to be mentioned.

### 5.3 Disposal

Parts of the valve may be contaminated with medium which is detrimental to health and the environment and therefore cleaning is not sufficient.



Risk of personal injury or damage to the environment due to the medium!

- ◆ Wear protective clothing when work is performed on the valve.
- ◆ Prior to the disposal of the valve:
  - Collect any medium, etc. which has escaped and dispose of it in accordance with the local regulations.
  - Neutralise any medium residues in the valve.
- ◆ Separate valve materials (plastics, metals etc.) and dispose of them in accordance with the local regulations.

## 6 Installation

- ◆ Examine valve for in-transit damage, damaged check valves must not be installed.
- ◆ Before installation the valve and the connecting pipe must be carefully cleaned to remove any dirt, especially hard foreign matter.
- ◆ During installation, pay attention to the correct tightening torque, aligned pipes and tension-free assembly.

### 6.1 Flange caps and gaskets

Leave protective caps on the flanges until just prior to installation.

Where there is a particularly high risk of damage to the plastic sealing surfaces, e.g. if the mating flanges are made of metal or enamel, PTFE-lined gaskets with a metal inlay should be used. These gaskets are available as special accessories in the Richter range.

### 6.2 Direction of flow and installation position



The direction of flow must be observed when installing the sight glass.

It is indicated by a direction arrow on the glass cylinder.

### 6.3 Grounding

Additional grounding of the sight glass is unnecessary. All internal parts are in contact with conductive media.

### 6.4 Pressure test

The test pressure PT of a sight glass must not exceed the value of  $1.5 \times \text{PN/PS}$  as per the identification of the sight glass.

## 7 Operation

### 7.1 Initial commissioning

Normally, the sight glasses have been tested for leaks with air or water.

Unless otherwise agreed, there could be residual amounts of water in the flow section of the sight glass; this could result in a possible reaction with the medium.

Following the initial loading of the sight glass with operating pressure and temperature, the torques of all connecting bolts must be checked. See [Section 1.2](#).

### 7.2 Improper operation and their consequences

- ◆ Avoid excessive dirt as otherwise high pressure losses or damage to the sight glass could occur.
- ◆ Non-observance of the pressure-temperature diagram can lead to damage.

### 7.3 Shutdown

The local regulations are to be observed when dismantling the sight glass.

Before undoing the flange bolts:

- ◆ Ensure the plant is depressurised
- ◆ Flush out medium
- ◆ Observe safety regulations.

After dismantling, immediately protect the sight glass flanges against mechanical damage using flange caps.

See also [Section 6.1](#).

## 8 Malfunctions

### ◆ Flange connection sight glass/pipe is leaking

Check the tightening torques of the pipe screws with a torque wrench. If this does not remedy the leak, the recommended torques may be exceeded by 10%.

If this also fails to stop the leak, the lining may be damaged. Dismantle the sight glass and inspect.

### ◆ Flange connection end piece/glass cylinder is leaking

Undo hex. nuts on the side towards the glass cylinder. Retighten hex. nuts on the outside in diametrically opposite sequence. If there is still a leak, the recommended tightening torques may be exceeded by 10%. Counter with hex. nuts on the inside.

## 9 Maintenance

### ◆ During dismantling and assembly work, observe the information and drawings in Sections 1 and 10.

◆ All repair work is to be performed by qualified personnel using the appropriate tools. Generally recognised practice in mechanical engineering is to be observed.

◆ For the arrangement, designation and item numbers of all parts of the valve, see Section 10.

◆ Spare parts are to be ordered with all the details in acc. with the valve identification.

◆ Only original spare parts may be installed.

◆ To prevent leaks, a regular check of the connection screws should be made in line with the operating requirements.

For torques see Section 1.2.

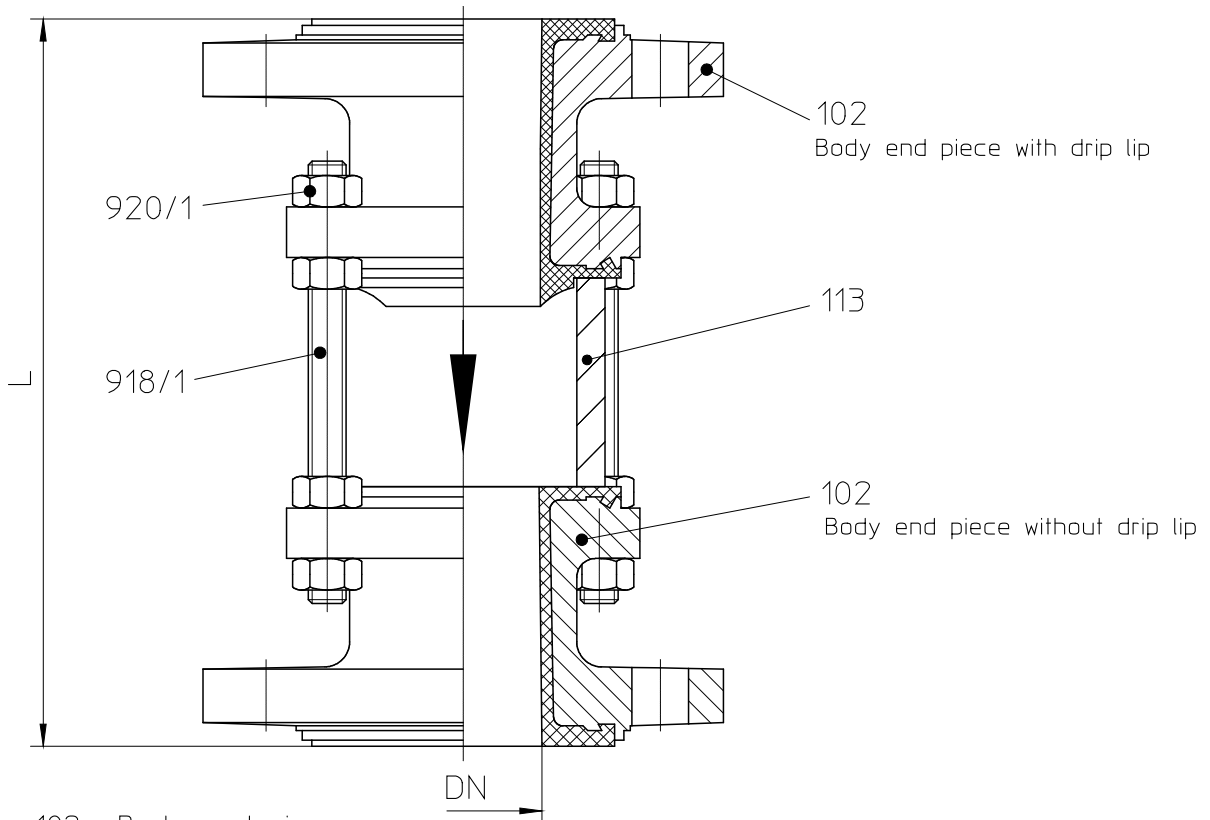
### 9.1 Dismantling the cylindrical sight glass

➤ Undo end piece nuts and remove the end piece. During re-assembly, ensure that all nuts are tightened evenly.

It is essential to ensure that the glass cylinder is subjected to uniform loading.

For tightening torques, see Section 1.2.

**10 Sectional drawing**



- 102 Body end piece
- 113 Glass cylinder
- 918/1 Threaded rod
- 920/1 Hex. nut

9500-43-1141\_en/4-0

DN	15	20	25	32	40	50	65	80	100
L	130	150	160	180	200	230	290	310	350

**CE Konformitätserklärung** nach EN ISO//IEC 17050  
**Declaration of Conformity** according to EN ISO//IEC 17050

Produkt <i>Product</i>	Kunststoffausgekleidete Schaugläser und Schmutzfänger <i>Plastic lined sight glasses and strainers</i>	
Bauart <i>Design</i>	Schauglas, Schmutzfänger <i>Sight glass, strainer</i>	
Baureihe <i>Series</i>	PSG, TSG, GS, GSO, SGS	
Nennweite <i>Size</i>	DN 15 bis DN 200, 1/2" bis 8" <i>DN 15 to DN 200, 1/2" to 8"</i>	
Seriennummer <i>Series number</i>	ab/from 29.12.2009	
EU-Richtlinie <i>EU-Directive</i>	97/23/EG Druckgeräterichtlinie <i>97/23/EC Pressure Equipment Directive</i>	
Angewandte Technische Spezifikation <i>Applied Technical Specification</i>	DIN EN ISO 12100-2 AD 2000	
Überwachungsverfahren <i>Surveillance Procedure</i>	97/23/EG Zertifizierungsstelle für Druckgeräte der TÜV Nord Systems GmbH & Co. KG Notified Body 0045	
Konformitätsbewertungs- verfahren 97/23/EG <i>Conformity assessment procedure 97/23/EC</i>	Modul H	
Kennzeichnung <i>Marking</i>	97/23/EG <sup>1)</sup> ≥ DN 32, ≥ 1" 97/23/EC <sup>1)</sup> ≥ DN 32, ≥ 1"	<b>CE</b> 0045


Das Unternehmen Richter Chemie-Technik GmbH bescheinigt hiermit, dass die o.a. Baureihen die grundsätzlichen Anforderungen der aufgeführten Richtlinien und Normen erfüllt.  
*Richter Chemie-Technik GmbH confirms that the basic requirements of the above specified directives and standards have been fulfilled.*

<sup>1)</sup> Für nicht aufgeführte Nennweiten ist eine Kennzeichnung nicht zulässig.  
*For sizes not listed a marking is not permissible.*

Kempen, 14.01.2011



G. Kleining  
Leiter Forschung & Entwicklung  
Manager Research & Development



A. Linges  
Leiter Qualitätsmanagement  
Quality Manager

## Herstellereklärung / *Manufacturer's Declaration*

### TA-Luft / *German Clean Air Act (TA-Luft)*

#### Richter Schaugläser / *Richter Sight Glass*

Hiermit erklären wir, dass die Schaugläser der Baureihen  
*Hereby we declare, that the Sight Glasses of the series*

#### **PSG, TSG, VSG, SGS, SR**

die Anforderung bezüglich der Gleichwertigkeit gemäß Ziffer 5.2.6.4 der Technischen Anleitung-Luft (TA-Luft vom 01.10.2002 / VDI 2440 Ziffer 3.3.1.3) erfüllen.

Grundlage sind die "Prüfgrundsätze für den Eignungsnachweis von Spindelabdichtungen in Armaturen als gleichwertig nach TA-Luft" des TÜV Süddeutschland Bau und Betrieb GmbH vom 22.09.1992.

Die Herstellereklärung beinhaltet den Eignungsnachweis einer inneren Flanschverbindung gemäß VDI 2440 hinsichtlich Dichtheit bzw. der Einhaltung der spezifischen Leckagerate nach TA-Luft  $\lambda \leq 10^{-4} \frac{\text{mbar} \cdot \text{l}}{\text{s} \cdot \text{m}}$  und einer erweiterten Prüfung unter Betriebsbedingungen.

Voraussetzung für die Gültigkeit der Herstellereklärung ist das Beachten und Einhalten der Betriebsanleitung. Insbesondere sind regelmäßige Wartungsintervalle durchzuführen und die dichtheitsrelevanten Schraubverbindungen zu überprüfen und, wenn notwendig, nachzuziehen.

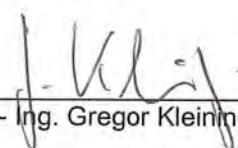
*meets the requirement relating to the equivalence according to Section 5.2.6.4 of the German Clean Air Act (Clean Air Act dated 01.10.2002 / VDI 2440 Section 3.3.1.3).*

*The basics are the "Testing principles for the suitability verification of stem seals in valves as being equivalent in accordance to the German Clean Air Act of the TÜV Süddeutschland Bau und Betrieb GmbH dated 22 September 1992.*

*Additionally, the manufacture's declaration contains the suitability verification of a stem seal and internal flange connection in accordance to VDI 2440 with regard to tightness and the observance of the specific leakage rate according to the German Clean Air Act  $\lambda \leq 10^{-4} \frac{\text{mbar} \cdot \text{l}}{\text{s} \cdot \text{m}}$  and an extended test under the above-mentioned operating conditions.*

*Manufacturer's declaration validity is dependent on the operating instructions being read and observed. In particular, service must be conducted at regular intervals and the bolted connection relevant for tightness should be inspected and retightened if necessary.*

Kempen, 01.03.2010

  
Dipl.- Ing. Gregor Kleinig

Leiter Forschung & Entwicklung  
Manager Research & Development

Erstellt/Compiled: CRM/GK am/on : 23.02.2010  
Genehmigt/Approved: CRQ/AI am/on: 23.02.2010

  
Dipl. Wirt.- Ing. Alexander Linges

Leiter Qualitätsmanagement  
Quality Manager

Seite/Page :1 QM-Nr.: 0905-40-1022\_Schaugläser/4-04  
von/of :1

## Safety Information / **Declaration of No Objection** Concerning the Contamination of Richter-Pumps, -Valves and Components

### 1 SCOPE AND PURPOSE

Each entrepreneur (operator) carries the responsibility for the health and safety of his employees. This extends also to the personnel, who implements repairs with the operator or with the contractor.

Enclosed declaration is for the information of the contractor concerning the possible contamination of the pumps, valves and component sent in for repair. On the basis of this information for the contractor is it possible to meet the necessary preventive action during the execution of the repair.

Note: The same regulations apply to repairs **on-site**.

### 2 PREPARATION OF DISPATCH

Before the dispatch of the aggregates the operator must fill in the following declaration completely and attach it to the shipping documents. The shipping instructions indicated in the respective manual are to be considered, for example:

- Discharge of operational liquids
- remove filter inserts
- lock all openings hermetically
- proper packing
- Dispatch in suitable transport container
- Declaration of the contamination fixed **outside!!** on the packing

# Declaration about the Contamination of Richter Pumps, -Valves and Components

The repair and/or maintenance of pumps, valves and components can only be implemented if a completely filled out declaration is available. If this is not the case, delay of the work will occur. If this declaration is not attached to the devices, which have to be repaired, the transmission can be rejected.

**Every aggregate has to have it's own declaration.**

This declaration may be filled out and signed only by authorized technical personnel of the operator.

Contractor/dep./institute : _____		Reason for transmitting <input checked="" type="checkbox"/> Please mark the applicable	
Street : _____		<b>Repair:</b> <input type="checkbox"/> subject to fee <input type="checkbox"/> Warranty	
Postcode, city: _____		<b>Exchange:</b> <input type="checkbox"/> subject to fee <input type="checkbox"/> Warranty	
Contact person: _____		<input type="checkbox"/> Exchange/ Replacement already initiated/received	
Phone : _____	Fax : _____	<b>Return:</b> <input type="checkbox"/> Leasing <input type="checkbox"/> Loan <input type="checkbox"/> for credit note	
<b>End user :</b> _____			
<b>A. Details of Richter-product:</b>		<b>Failure description:</b>	
<b>Classification:</b> _____		_____	
<b>Article number:</b> _____		<b>Equipment:</b> _____	
<b>Serial number:</b> _____		<b>Application tool:</b> _____	
_____		<b>Application process:</b> _____	
<b>B. Condition of the Richter-product:</b>		<b>Contamination :</b>	
	no <sup>1)</sup>   yes   no		no <sup>1)</sup>   yes
Was it in operation ?	<input type="checkbox"/>   <input type="checkbox"/>   <input checked="" type="checkbox"/>	toxic	<input type="checkbox"/>   <input type="checkbox"/>
Drained (product/operating supply item) ?	<input checked="" type="checkbox"/>   <input type="checkbox"/>   <input type="checkbox"/>	caustic	<input type="checkbox"/>   <input type="checkbox"/>
All openings hermetically locked!	<input checked="" type="checkbox"/>   <input type="checkbox"/>   <input type="checkbox"/>	inflammable	<input type="checkbox"/>   <input type="checkbox"/>
Cleaned ?	<input type="checkbox"/>   <input type="checkbox"/>   <input type="checkbox"/>	explosive <sup>2)</sup>	<input type="checkbox"/>   <input type="checkbox"/>
If yes, with which cleaning agent:		mikrobiological <sup>2)</sup>	<input type="checkbox"/>   <input type="checkbox"/>
and with which cleaning method:		radioactive <sup>3)</sup>	<input type="checkbox"/>   <input type="checkbox"/>
		other pollutant	<input type="checkbox"/>   <input type="checkbox"/>
<sup>1)</sup> if "no", then forward to D. <span style="float:right">←</span> <sup>2)</sup> Aggregates, which are contaminated with microbiological or explosive substances, are only accepted with documented evidence of an approved cleaning. <sup>3)</sup> Aggregates, which are contaminated with radioactive substances, are not accepted in principle.		↓	
<b>C. Details of the discharged materials (must be filled out imperatively)</b>			
1. <b>With which materials did the aggregate come into contact ?</b> Trade name and/or chemical designation of operational funds and discharged materials, material properties, e.g. as per safety data sheet (e.g. toxic, inflammable, caustic)			
X	Trade name:	Chemical designation:	
a)	_____		
b)	_____		
c)	_____		
d)	_____		
2. <b>Are the materials specified above harmful to health ?</b>		no   yes	←
		<input type="checkbox"/>   <input type="checkbox"/>	
3. <b>Dangerous decomposition products during thermal load ?</b>		<input type="checkbox"/>   <input type="checkbox"/>	
<b>If yes, which ones ?</b>		_____	

**D. Mandatory declaration:** We assure that the data in this explanation are truthful and complete and as a signatory I am able to form an opinion about this. We are aware that we are responsible towards the contractor for damages, which results from incomplete and incorrect data. We commit ourselves to exempt the contractor from claims for damages of thirds resulting from incomplete or incorrect data. We are aware that we are directly responsible towards thirds, irrespective of this declaration, which belongs in particularly to the employees of the contractor consigned with the handling repair of the product.

Name of the authorized person (in block letters): \_\_\_\_\_

\_\_\_\_\_ Date

\_\_\_\_\_ Signature

Company stamp

**FAX****Fax No. ()****Pages (incl. cover sheet) ()****To:**

()

Richter Chemie-Technik GmbH  
Otto-Schott-Straße 2  
D-47906 KempenTelefon +49 (0) 21 52/146-0  
Telefax +49 (0) 21 52/146-190richter-info@richter-ct.com  
www.richter-ct.comContact person:  
()Reference:  
()Extension:  
- ()E-Mail Address:  
()Date:  
()**Your order No.:** ()**Our Kom. No.:** ()**Serial No.:** ()

Dear Sirs,

The compliance with laws for the industrial safety obligates all commercial enterprises to protect their employees and/or humans and environment against harmful effects while handling dangerous materials.

The laws are such as: the Health and Safety at Work Act (ArbStättV), the Ordinance on Harzadous Substances (GefStoffV, BIOSTOFFV), the procedures for the prevention of accidents as well as regulations to environmental protection, e.g. the Waste Management Law (AbfG) and the Water Resources Act (WHG)

An inspection/repair of Richter products and parts will only take place, if the attached explanation is filled out correctly and completely by authorized and qualified technical personnel and is available.

In principle, radioactively loaded devices sent in, are not accepted.

Despite careful draining and cleaning of the devices, safety precautions should be necessary however, the essential information must be given.

The enclosed declaration of no objection is part of the inspection/repair order. Even if this certificate is available, we reserve the right to reject the acceptance of this order for other reasons.

Best regards  
RICHTER CHEMIE-TECHNIK GMBHEnclosures

()