

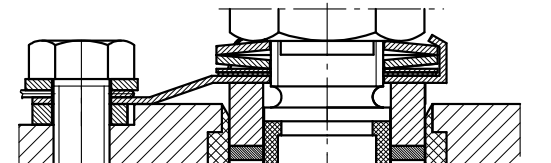
dazu gehört:
 232 Stützscheibe
 300 Gleitlager
 533 Formblech
 950/1 Tellerfeder

includes:
 232 support disc
 300 plain bearing
 533 profiled sheet
 950/1 cup spring


contient:
 232 rondelle d'appui
 300 palier lisse
 533 tôle profilée
 950/1 rondelle belleville

- | | | | | | |
|-------|----------------|-------|-------------------|------------------------|--------------------------------|
| 920/1 | 203 | 103 | Mittelteil | body centre piece | partie centrale |
| 920/2 | 405 | 109 | Übergangsdeckel | transition cover | couvercle de passage |
| 504 | 500 | 111 | Deckelhalterung | cover holder | support de couvercle |
| | 905/1 | 200 | Kugel | ball | boisseau sphérique |
| | 920/4 (DN 100) | 202 | Schaltwelle | stem | tige de transmission |
| | 402/1 | 203 | Hebel | lever | levier de manoeuvre |
| | 202 | 401 | Sitzring | seat ring | bague de siège |
| | 109 | 402/1 | Packungsring | packing ring | bague de serrage |
| | 200 | 405 | Druckring | thrust ring | cône de serrage |
| | 980/1 | 500 | Ring | ring | bague |
| | 111 | 504 | Tellerfederkäfig | cup spring cage | cage à ressort |
| | 103 | 530 | Distanzbuchse | distance bushing | douille d'écartement |
| | 401 | 532 | Erdungsseil | grounding rope | câble de mise à la terre |
| | | 554/1 | Unterlegscheibe | washer | rondelle |
| | | 901/1 | 6kt-Schraube | hex. screw | vis hexagonale |
| | | 905/1 | Schaftschraube | headless screw | vis sans tête |
| | | 920/x | 6kt-Mutter | hex. nut | écrou hexagonal |
| | | 980/1 | Halbrundkerbnagel | round head grooved pin | clou cannelé à tête demi-ronde |

DN	25	40	50	65	80	100
L	75	90	100	115	130	150
H	120	165	170	170	190	190
HL	143	225	225	225	225	325
Kugel Innen-ø	25	40	50	50	65	80



selbstnachstellende wartungsfreie Stopfbuchse
 self adjusting packing
 autoreglable presse-étoupe sans entretien

KK/F		Datum	Name	Maßstab	
		Bearb. 06.04.2001	Schellschm		
		TM 5927	20.09.2004	Schellschm	1:2
		Zeichn.-Nr.			9520-00-0085/4-01
		Komm.-Nr.			
 © Richter Chemie-Technik GmbH Otto-Schoff-Str.2 D-47906 Kempen Tel. +49(0)2152/146-0, Fax +49(0)2152/146-190, e-mail: info-richter@richter-ct.com		Blatt 1		von 1 Bl.	